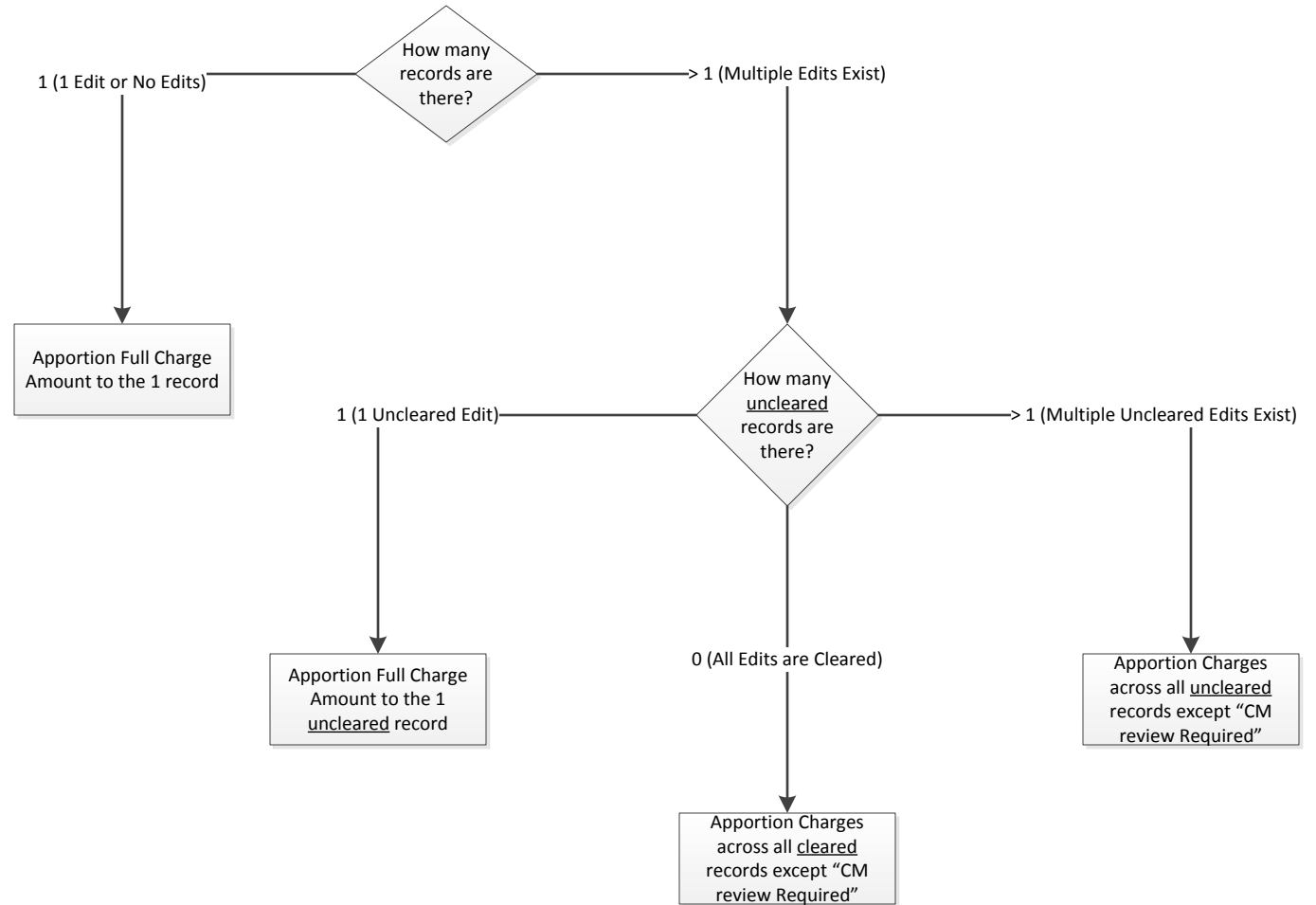


TES Apportioning Logic



RULES

- If claims manager review required is the only edit, then all apportioning goes to that record
- If there are no edits, then all apportioning goes to that record
- If there are uncleared edits, then apportion across all uncleared edits (except CM review, unless it is the only record)
- If there are no uncleared edits, then apportion across all edits (except CM review, unless it is the only record)